

Alnwick Bus Station Bus Service Improvement Plan

Following a successful bid to secure external funding as part of the Bus Service Improvement Plan, Alnwick Bus Station is set to benefit from 'Safety and Accessibility' driven improvements.

The station has been highlighted as a priority area for regeneration in the town in recent years and the key issues raised are often related to lack of safety and accessibility. Design work is underway to transform the Bus Station into an inclusive space for easier access to your bus services. The station will complement the fantastic offer of Alnwick, becoming a welcoming gateway into the town.

Project Vision

The project will create a welcoming and inclusive bus station for all users in Alnwick.

Project Aims

- To increase the proportion of people using buses in Alnwick.
- To improve the accessibility to bus services.
- To provide an environment where all users can feel safe.
- To reduce emissions and improve air quality in Alnwick by offering an alternative to car use.

Project Outcomes

- Improved overall quality of the Alnwick Bus Station environment adding to the existing landscaping and green areas.
- Improved bus information, (real-time information and audio announcements).
- Safer and improved footways, crossing points, dropped kerbs, tactile paving.
- Improved seating within the bus station and outside
- Better CCTV and lighting.

We welcome your views to help shape the interventions as the design progresses.

Project Timeline



Alnwick Bus Station

The sustainable gateway to Alnwick

The bus station at Alnwick has long been a hub for the town with some key issues to address. The station itself is outdated and uncharacteristic of the Conservation Area and with access to and from the station being challenging for some users and in some cases unsafe.

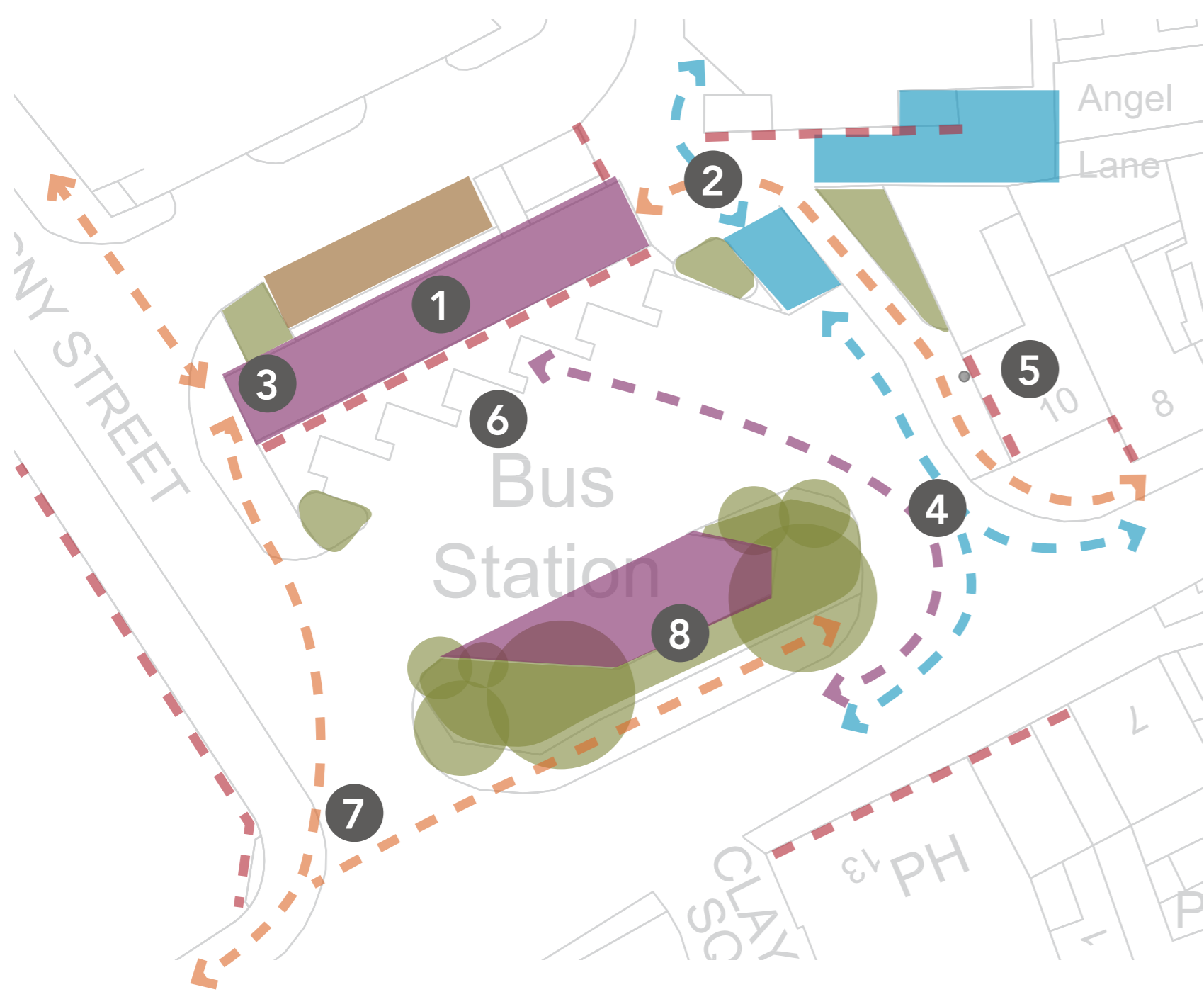
The proposed works at the station aim to create a much safer and accessible space for all. Improved routes and surfacing better address the arrival to the town and introduction of diverse green spaces improve the arrival experience to Alnwick.

Crossing points to improve safe navigation to the station

Seating areas and proposed planting to enhance the journey to Alnwick for local people and visitors



▲ Original concept vision for the bus station by WSP showing and open and airy concourse with vibrant planting and new area of public realm



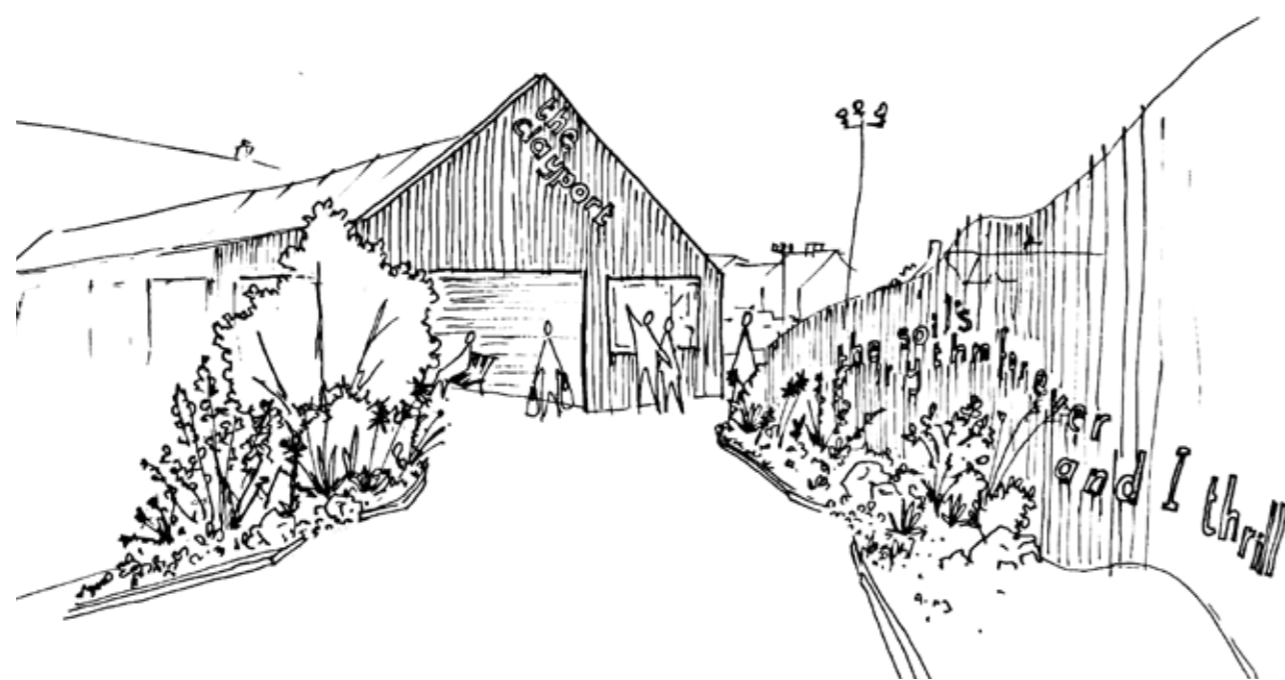
▲ Analysis of the key issues at Clayport Bus Station

Understanding of key issues

- 1 The existing bus station at Clayport is a dated construction not in keeping with the aesthetic of the Conservation Area
- 2 There is a conflict and safety risk between pedestrians and servicing at the key arrival and orientation point from the station
- 3 Local arrival from the west is poorly defined and difficult to navigate
- 4 There is a conflict between bus arrival and service vehicle movements
- 5 The Arriva information centre and external space is not welcoming and bare gable end to west uninviting
- 6 Bus access is challenging in terms of accessibility and waiting experience within the station is poor due to lighting, materiality and aesthetic
- 7 Very large road space and poor crossing along with pedestrian definition make space difficult to navigate
- 8 Mature trees help to define space and screen station but key space is underused and over-parked.



▲ Creation of meeting and information hub



▲ New arrival and public space creation providing a key gateway into Alnwick



▲ Creation of safe youth space in green environment

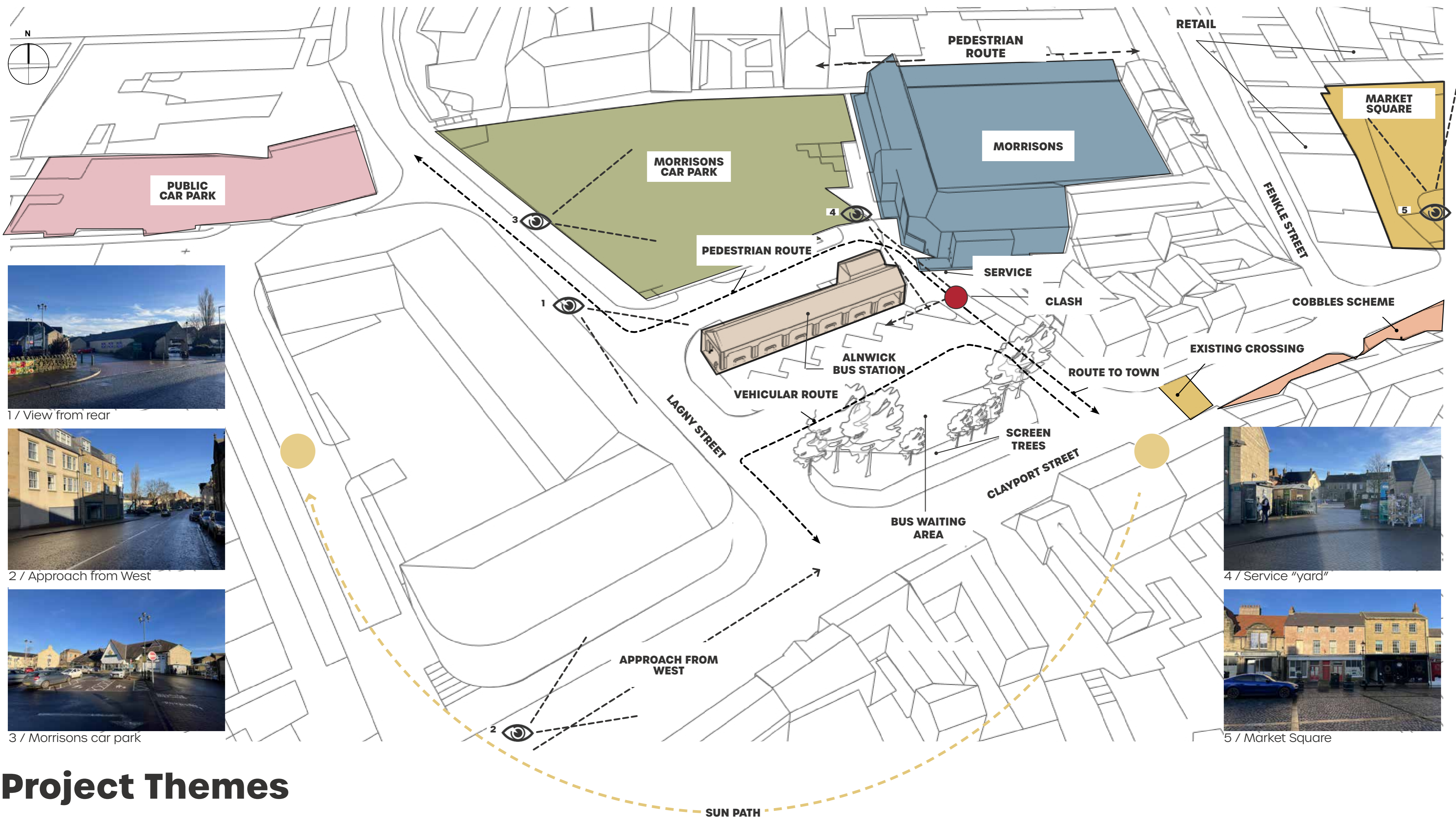


▲ Example of CoMoUK Mobility Hub - potential to explore use at Alnwick



▲ Proposed safety and accessibility improvements at the bus station

Site Analysis



1 / View from rear



2 / Approach from West



3 / Morrisons car park



4 / Service "yard"



5 / Market Square

Project Themes



MAGIC/ALCHEMY
Market Place/Harry Potter?/Play/Tourism



SAFETY AND SECURITY
Transparency/
Rooflights/Glazing/
Openings/Signage



BACKGROUND/FOREGROUND
Stone/Cobbles/Clay/Pottery/
Pops of Colour/Matte/
Glazed/Rough/Smooth



THEATRE
Screen/Overcladding



CELEBRATING HERITAGE
Clayport Heritage/Clay



WARM WELCOME
Timber Lining/Benches/Art



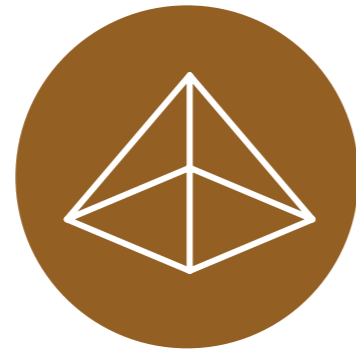
CLUSTERED FUNCTIONS?
Toilets/Bin Store/Cycle Hub/
Recycling



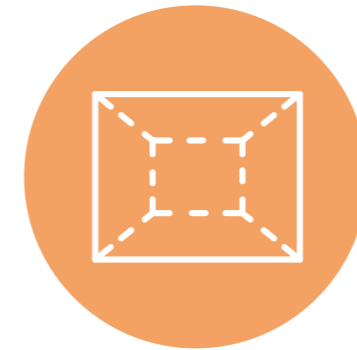
WAYFINDING
Tower/Supergraphics



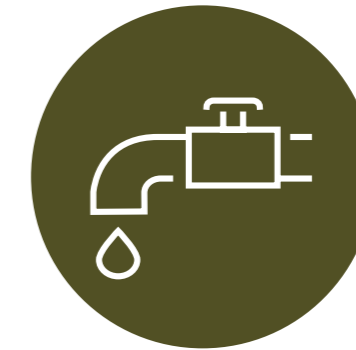
LOW CARBON
Reused/Locally Sourced/
Circular Economy



VERTICAL ELEMENTS
Columns/Gates/
Statues/Clock Tower



THRESHOLDS
Liminal Spaces/
Stepping Stones



WATER
Flow/Pants/Heritage

WE'D LIKE TO HEAR YOUR THOUGHTS AND SUGGESTIONS ABOUT THE CURRENT BUS STATION



"Alnwick is a magical market town in mid Northumberland which is home to Alnwick Castle (otherwise known as Hogwarts) a beautiful old train station which is now a secondhand bookshop and the amazing Alnwick Garden and Lilidorei at The Alnwick Garden."

visitsnorthumberland.com



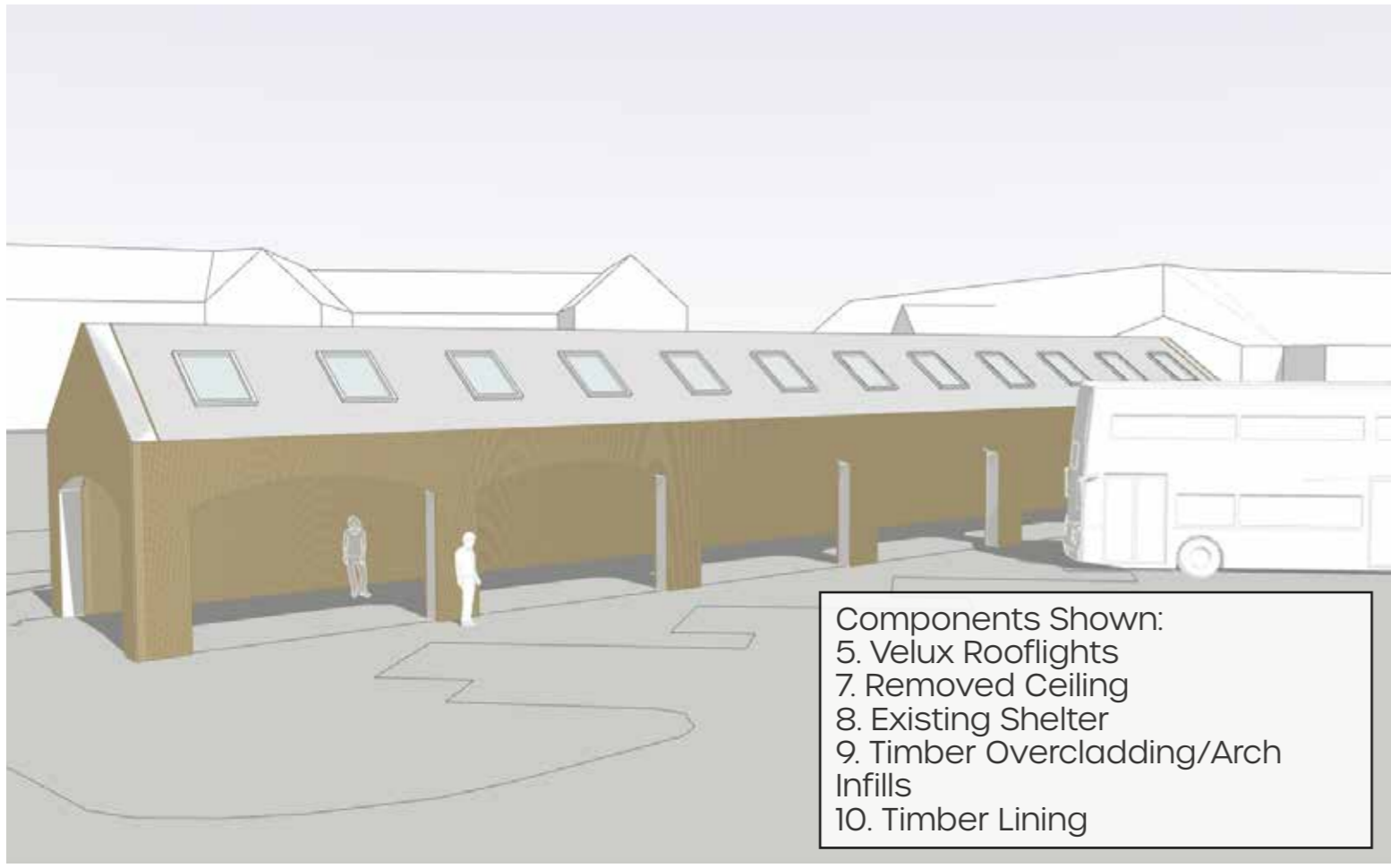
Possible Alterations and Additions to Improve the Bus Station

PLEASE USE STICKERS PROVIDED TO VOTE FOR 5 CHANGES TO THE STATION YOU WOULD MOST LIKE TO SEE?

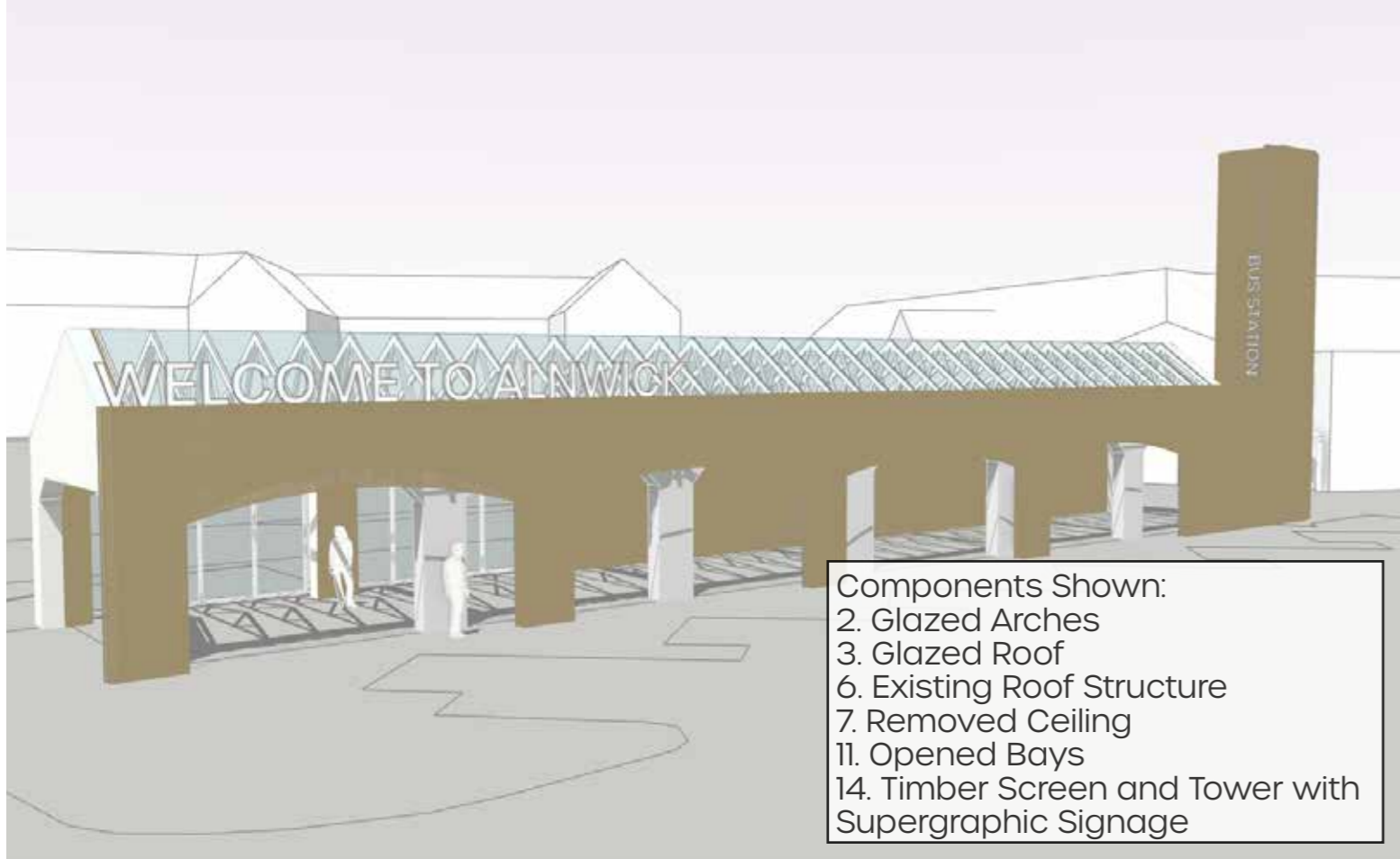
POSSIBLE COMPONENT COMBINATIONS



1 / Existing



2 / Low Intervention



3 / Medium Intervention



4 / High Intervention



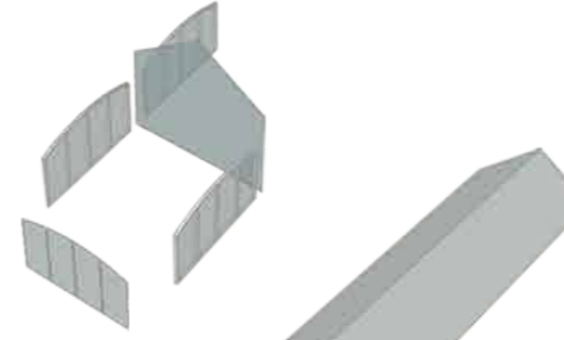
5 / Interior Lining and Rooflights

POSSIBLE COMPONENT PARTS

1



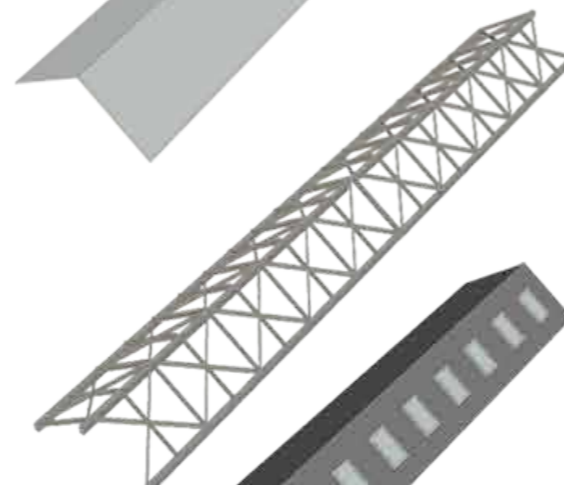
2



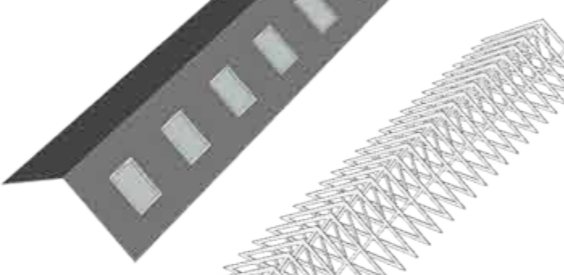
3



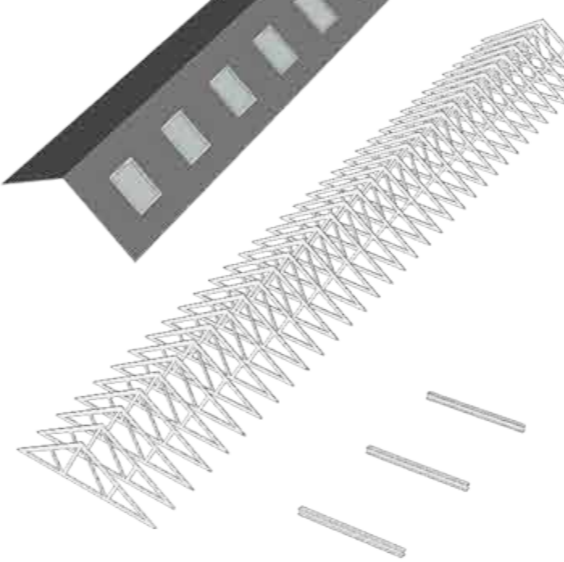
4



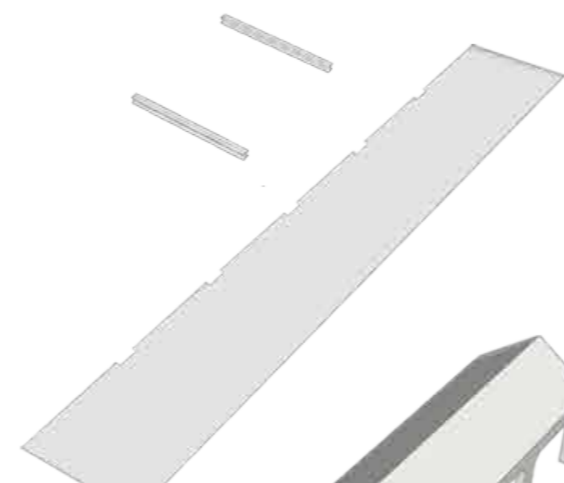
5



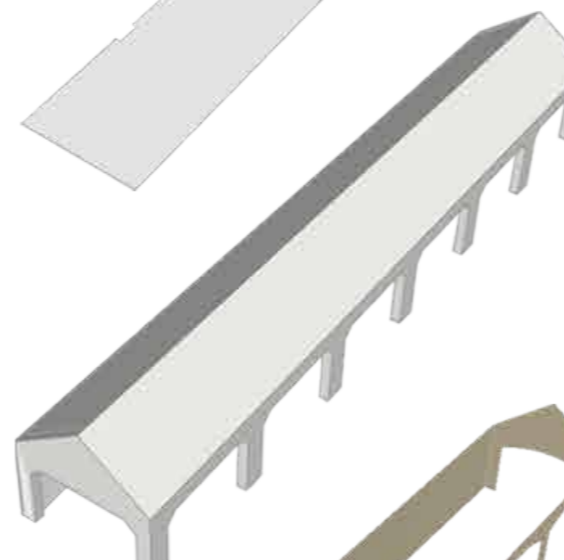
6



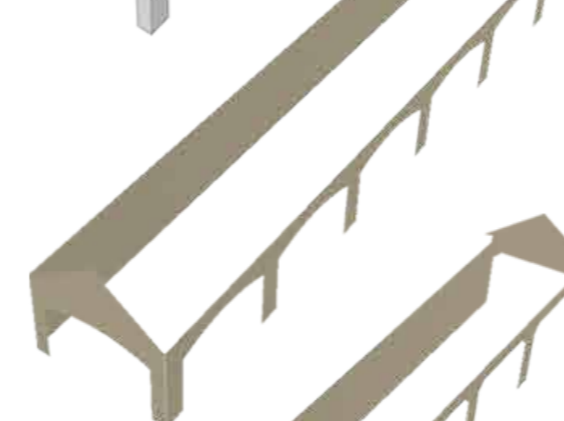
7



8



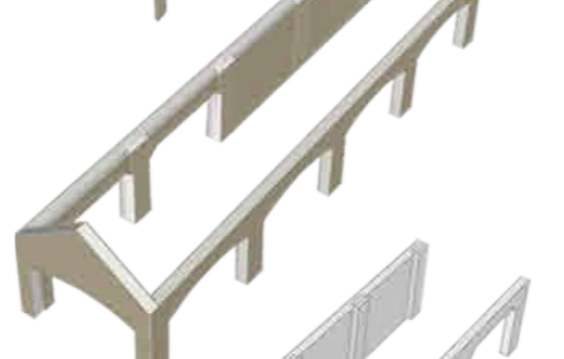
9



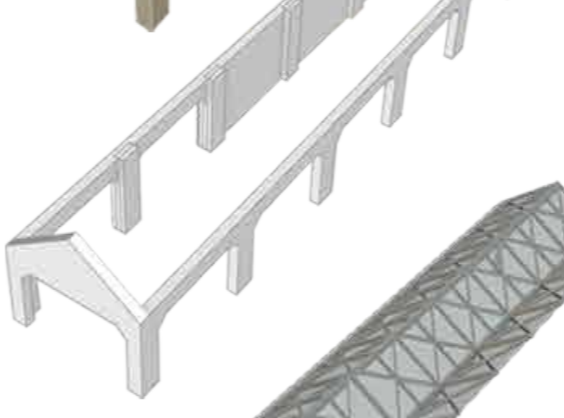
10



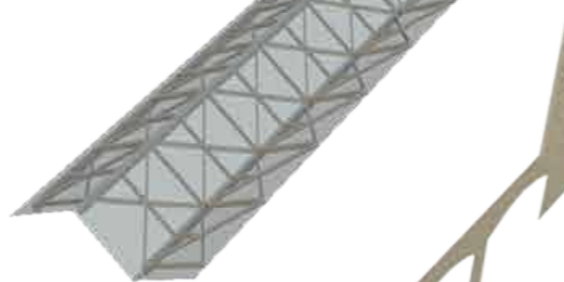
11



12



13



14



PRECEDENT EXAMPLES



Gallery



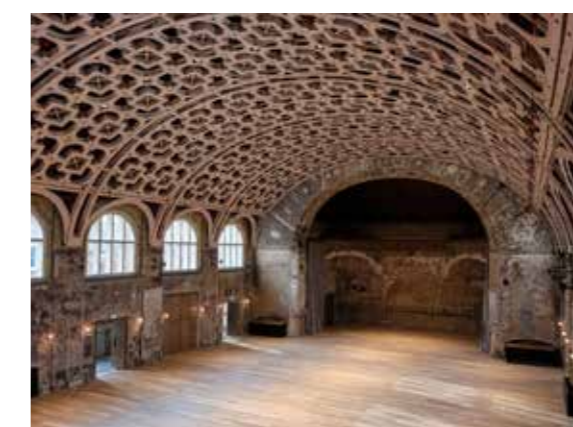
Glazed Openings



Diagrid Roof



Transparent Roof



Decorative Ceiling



Overcladding



Timber Lining



Canopy



Screen



Vertical Element

The Cobbles

Restoring the flow of an historic townscape

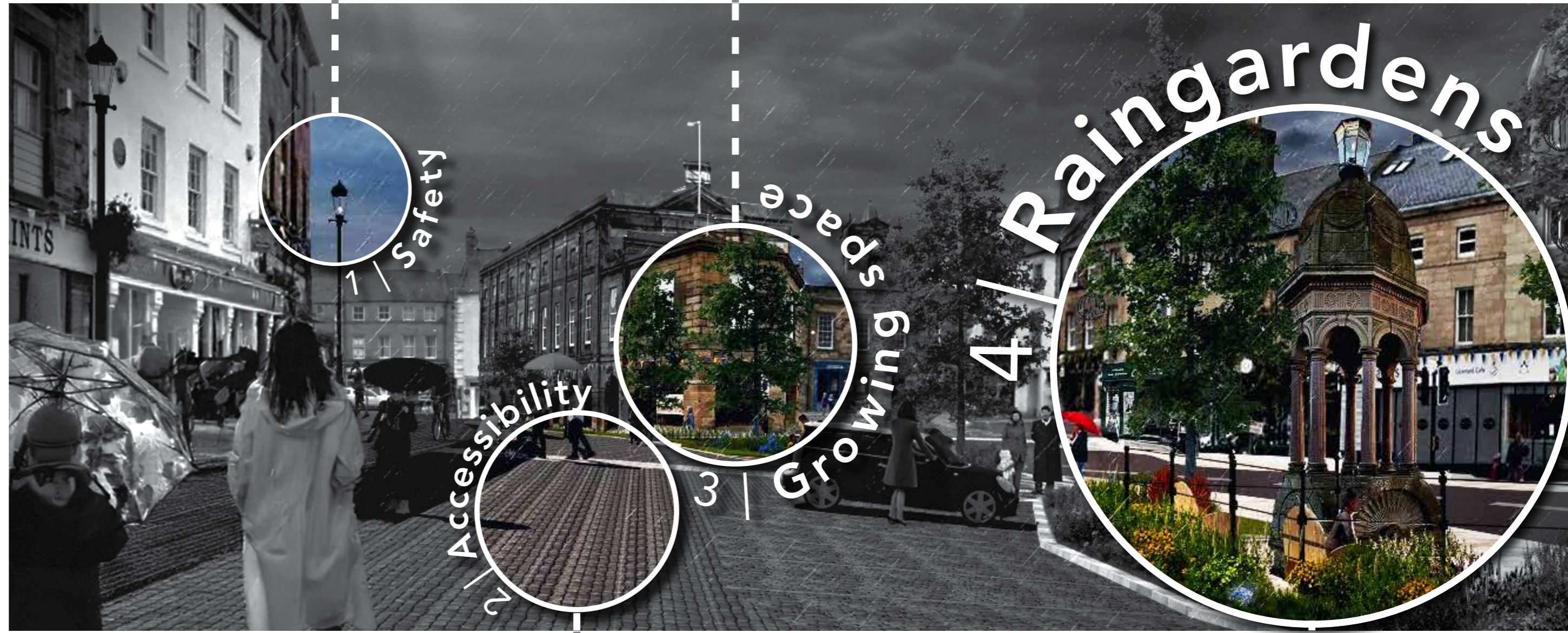
The Cobbles - an iconic public space at the centre of a world famous historic town. Though rich in heritage, they have long been difficult to navigate for those less mobile. Additionally, given the steeply sloping nature of the space challenging to move across, particularly when wet.

As part of an exciting programme of regeneration, Northumberland County Council, working with Alnwick Town Council plan to transform the space to reduce steps, provide safer walking surfaces, increase planting and capture rainwater for reuse in new planting areas.

- More accessible gradients where possible.
- Smoother surface treatments, reduction of steps.
- Improved sustainable drainage systems to prevent ponding and better safety.
- Clear wayfinding, wider footways and defined crossing points to reduce user conflict.

Additional lighting to make spaces safer

Protecting our existing trees by improving growing conditions



▲ Key themes of restoration works at The Cobbles

Paving to improve accessibility and restore historic character

Creating new planting areas that capture rainwater



Reduce stepped access and resurface the footpath and restore the historic waggonway

Relocation of the Baillifgate Museum into heart of Alnwick

Improve growing conditions for existing street trees

Enhance the setting of the historic Pans of Alnwick

Raingarden planting to capture rain water and create a vibrant green link through Alnwick

Improve surfacing and redefine historic links

Improved access into Market Place through better demarcation of bays and paths

▲ View along the Cobbles towards Market Place shows a vibrant green landscape for water capture celebrating Alnwick's story and relationship with water.



Growing space and soil of existing trees improved

Biodiverse raingardens created to capture rainwater and provide climate resilient planting

Historic waggonway restored and steps re-configured to improve access

Setting of the historic Pans of Alnwick enhanced with new surfacing and improved access

▲ Proposed layout plan for restoration of The Cobbles at Alnwick.